



**SDLG machines** are built to be like the people that own them: hardworking, genuine and reliable. Cost effective, robust machines with fuel efficient engines that are easy to operate and easy to maintain. And when you need parts or service, you can trust your dealership to deliver on the SDLG promise: **Reliability in Action.**



Congratulations SDLG for winning  
**EFQM Global Excellence Award**  
One of the top three quality awards in the world

**Shandong Lingong Construction Machinery Co., Ltd**

Contacts: Budapest, Benczúr u. 11, 1068 Hungary  
Website: [www.sdlg-eu.com](http://www.sdlg-eu.com) | Email: [info@sdlg-eu.com](mailto:info@sdlg-eu.com)  
[sales@sdlg-eu.com](mailto:sales@sdlg-eu.com) | +36 30 247 2606

**Member of the VOLVO Group Since 2007**

**SDLG is member of the Volvo Group** and one of the largest manufacturers of construction machinery in China, with a wide network of dealerships and service workshops throughout the world.

**Reliability in Action**

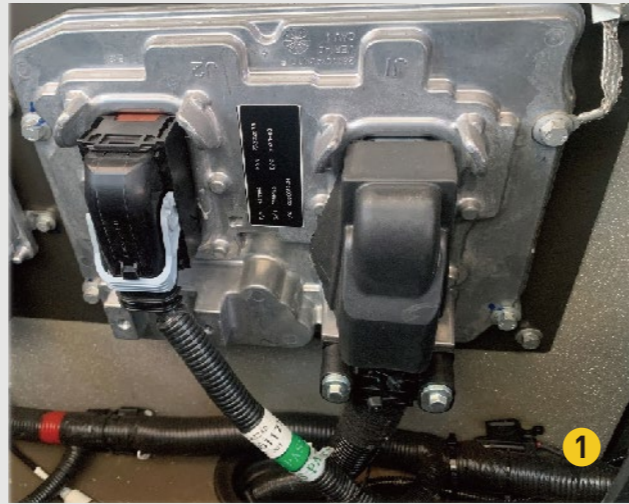
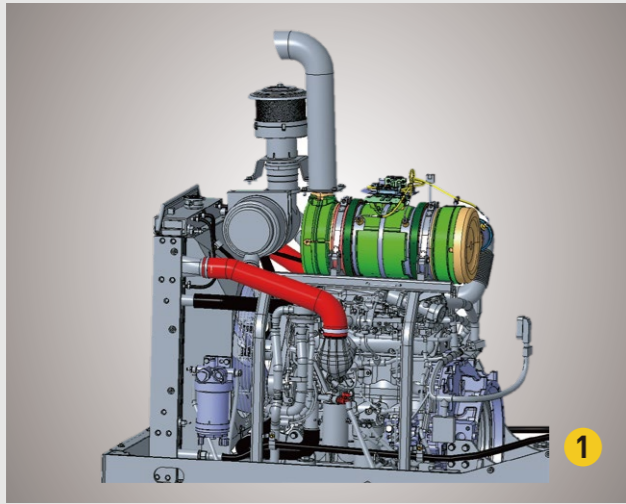


**L918H**  
**Wheel Loader**



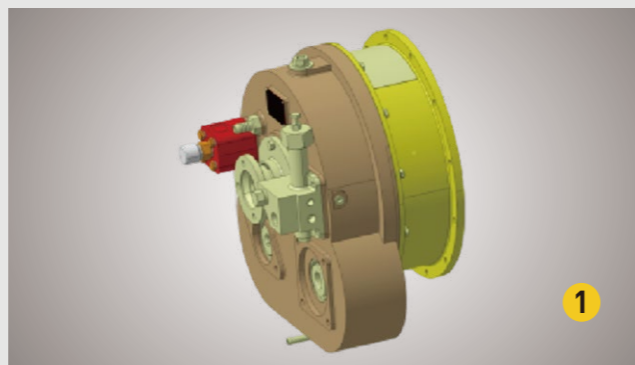
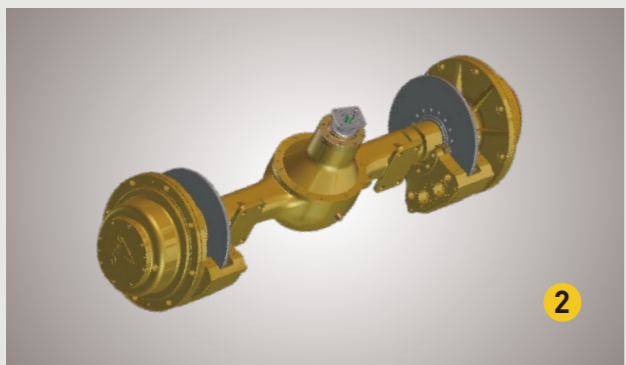
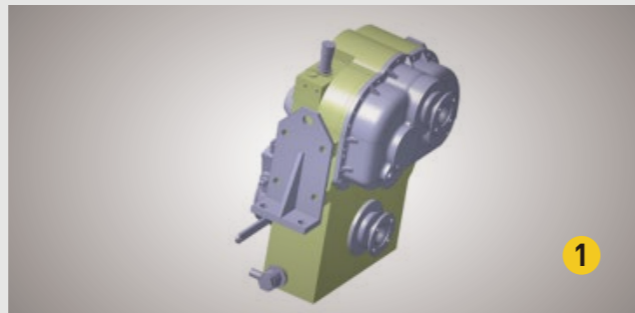
## Powerful and reliable

- 1 Cummins engine with EGR+DOC+DPF aftertreatment. The engine has strong power, low noise and reliable performance



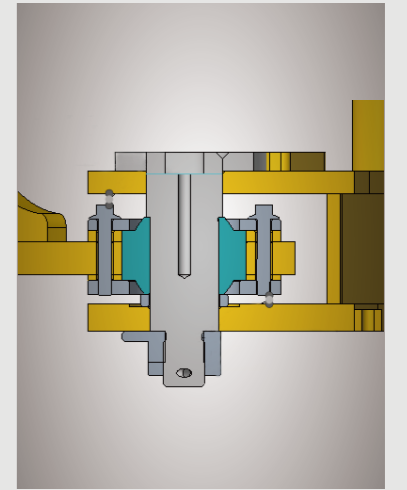
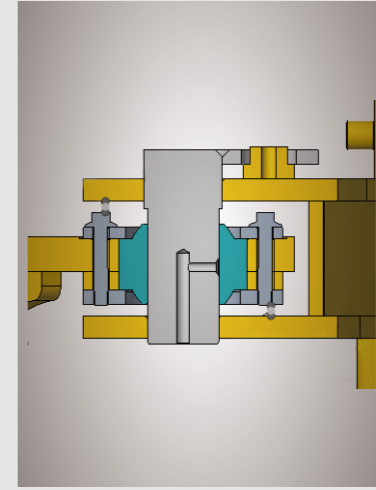
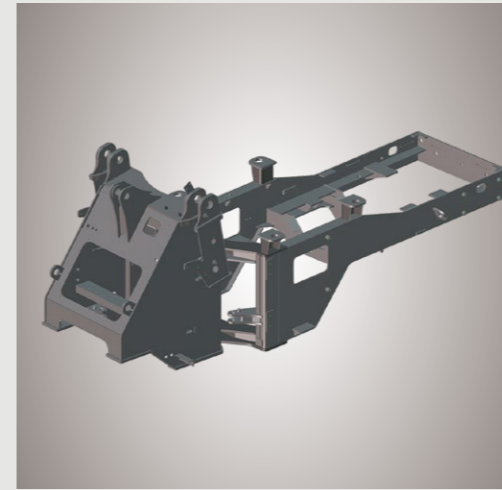
## Convenient maintenance, reduce machine downtime

- 1 Shantui torque converter, Hangchi fixed shaft electronically controlled gearbox, F2R2 gears, quality is stable and reliable
- 2 SDLG strengthened axle, rated load 7.5T, large load capacity, high reliability



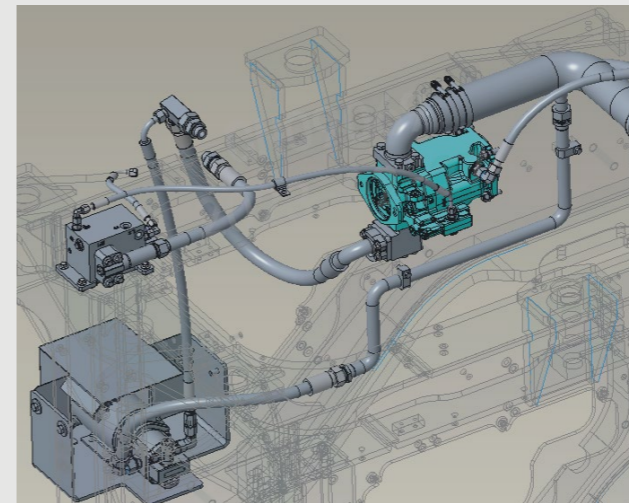
## High load and high reliability

- 1 Upgrading the bearing specifications, optimising the articulation structure, adjusting the gap between the top and bottom of the articulation, the articulation load carrying capacity is greatly improved



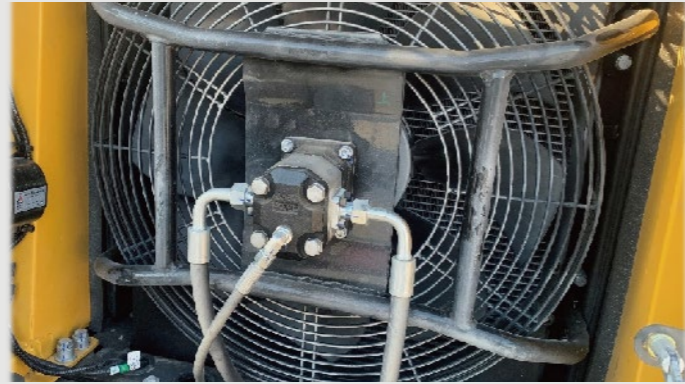
## Emergency turn to safety first

- 1 Equipped with emergency steering as standard, which is activated automatically when the steering fails or can be manually switched on to ensure steering safety as a priority



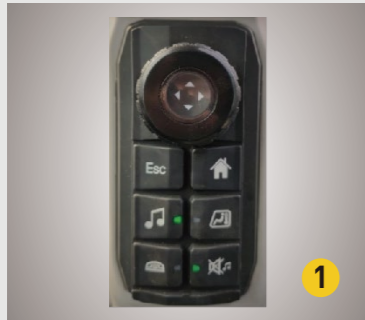
## Independent heat dissipation intelligent temperature control

- 1 Upgrading the bearing specifications, optimising the articulation structure, adjusting the gap between the top and bottom of the articulation, the articulation load carrying capacity is greatly improved



## Convenient maintenance, reduce machine downtime

- 1 Keypad + dashboard manipulation, operation is comfortable and convenient
- 2 Pilot single handle integrated control, integrated FNR, KD, attachments replacement function
- 3 The seat and control box are integrated and move together



## L918H

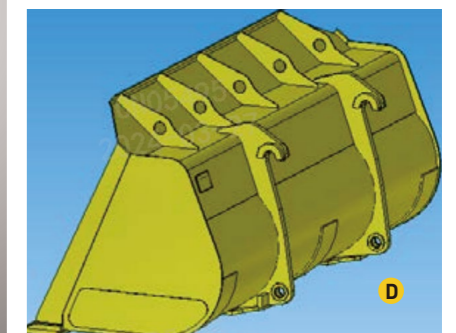
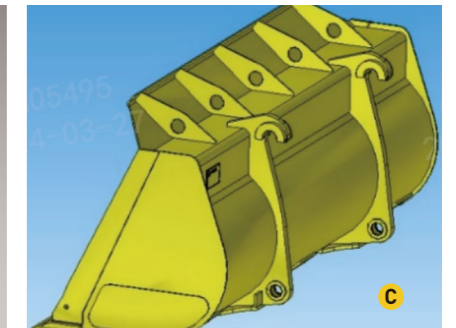
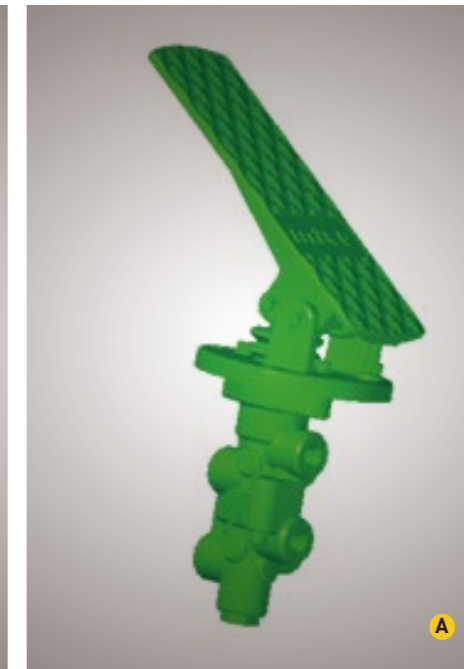
### Equipment and Features

#### Standard configurations

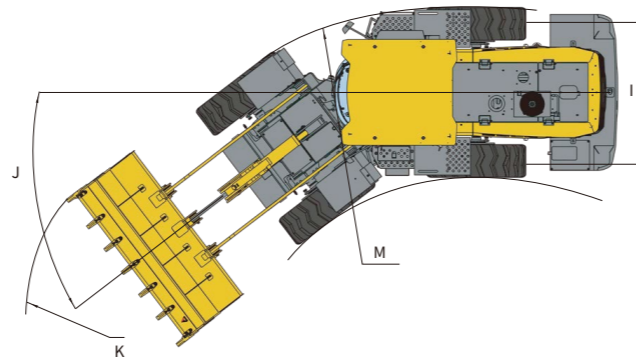
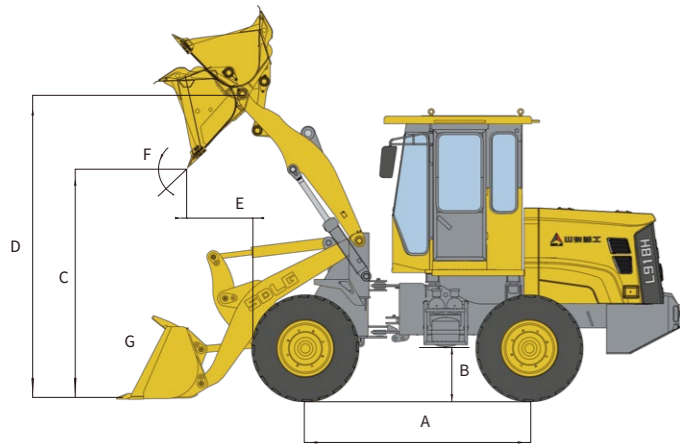
#	Disposition	
1	CUMMINS F3.8	
2	HangChi DB55	
3	SDLG AL12H	
4	Pilot single handle	
5	Standard Arm	
6	3-spool Valve	
7	Single Brake Pedal	A
8	GB2980-16/70-20-16PRTL	
9	ROPS Cab	B
10	AC	
11	Starting Interlocking	
12	Tachometer	
13	Rotate beacon	
14	GP bucket 1.0×2150(QC、 Bolted teeth)	

#### Optional equipment

#	Disposition	
1	GP bucket 1.0×2140 (QC、 Wear plate)	C
2	LM bucket 1.4×2320 (QC)	D



# L918H Main Parameter



Item	Specifications
<b>Overall dimension</b>	
L×W×H	6090×2150×3150mm
Wheel base(A)	2260mm
Min. ground clearance(B)	290mm
Max. dumping height(C)	2510mm
Lifting height(D)	3200mm
Dumping distance(E)	920mm
Dumping angle(F)	-45°
Bucket rollback at ground level(G)	44°
Wheel tread(I)	1630mm
Steering angle(J)	35°
Horizontal crossing radius(K)	5082mm
Min.turning radius(M)	4460mm

Item	Specifications
<b>Overall parameters</b>	
Bucket capacity	1.0m <sup>3</sup>
Rated load	1800kg
Operating weight	7260kg
Max.tractive force	≥57kN
Max.breakout force	58kN
Tipping load	/

Item	Specifications
<b>Engine</b>	
Model	F3.8
Type	Inline
Rated power	55kW
Rated speed	2200r/min
Engine displacement	3800ml
Cylinder bore/stroke	102/115mm
Max.torque(N.m)/speed(r/min)	400N.m/1300r/min
Emission standard	Europe Stage V
Min.fuel-consume ratio	212 g/kW.h
<b>Transmission system</b>	
Traveling brake type	Single-stage three-element hydraulic torque converter
Swing mode	Axis-fixed electric-hydraulic transmission
Gears	Forward 2 reverse 2
Speed at forward/ reverse gear I	0~9.5 km/h
Speed at forward/ reverse gear II	0~24.5 km/h
Speed at forward/ reverse gear III	/
Speed at forward/ reverse gear IV	/

Item	Specifications
<b>Hydraulic system of working device</b>	
Type	Hydraulic pilot control
Total time	≤9.04 s
<b>Brake system</b>	
Service brake type	Full hydraulic caliper disc brake
Parking brake type	Manual control internal expanding shoe brake
<b>Steering system</b>	
Type	Load sensing full hydraulic articulated steering
System pressure	12MPa
<b>Fill capacity</b>	
Fuel	120L
Hydraulic oil	102 L
Engine	10 L
Transmission	20 L
Drive axle	10+10 L
Braking system	4L

\* The right of final interpretation of the abovementioned parameters shall be reserved by SDLG. No further notice will be given in case of any change, illustrations in the text may not always be the standard illustrations for this model.