



SDLG machines are built to be like the people that own them: hardworking, genuine and reliable. Cost effective, robust machines with fuel efficient engines that are easy to operate and easy to maintain. And when you need parts or service, you can trust your dealership to deliver on the SDLG promise: **Reliability in Action.**



Congratulations SDLG for winning
EFQM Global Excellence Award
One of the top three quality awards in the world

Sinotec Europe Kft.

Contacts: Budapest, Benczúr u. 11, 1068 Hungary
Website: www.sdlg-eu.com | Email: info@sdlg-eu.com
sales@sdlg-eu.com | +36 30 247 2606

Member of the VOLVO Group Since 2007

SDLG is member of the Volvo Group and one of the largest manufacturers of construction machinery in China, with a wide network of dealerships and service workshops throughout the world.

Reliability in Action



E6375H

Hydraulic Excavator



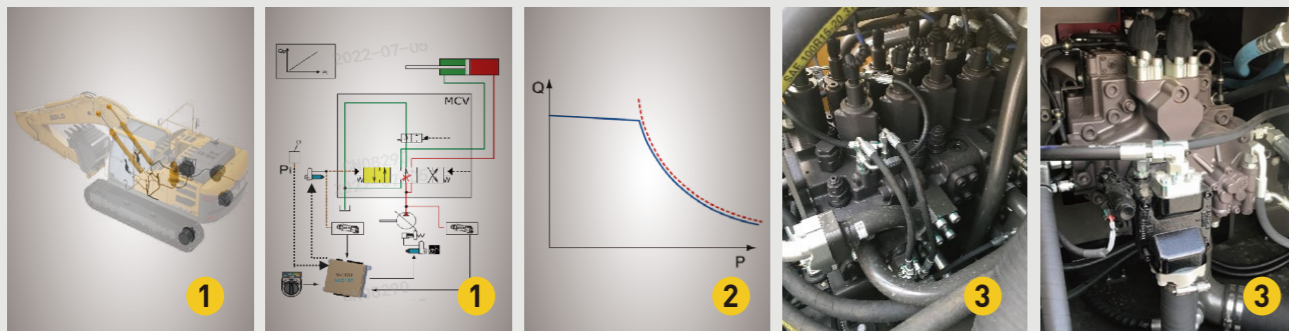
Energy-saving, efficient and powerful

- 1 Cummins large displacement engine, use high pressure common rail technology, high injection pressure, low fuel consumption, large displacement, support high power for machine
- 2 Ten gears engine speed cooperate well with different working condition, auto back to idle speed, saving energy



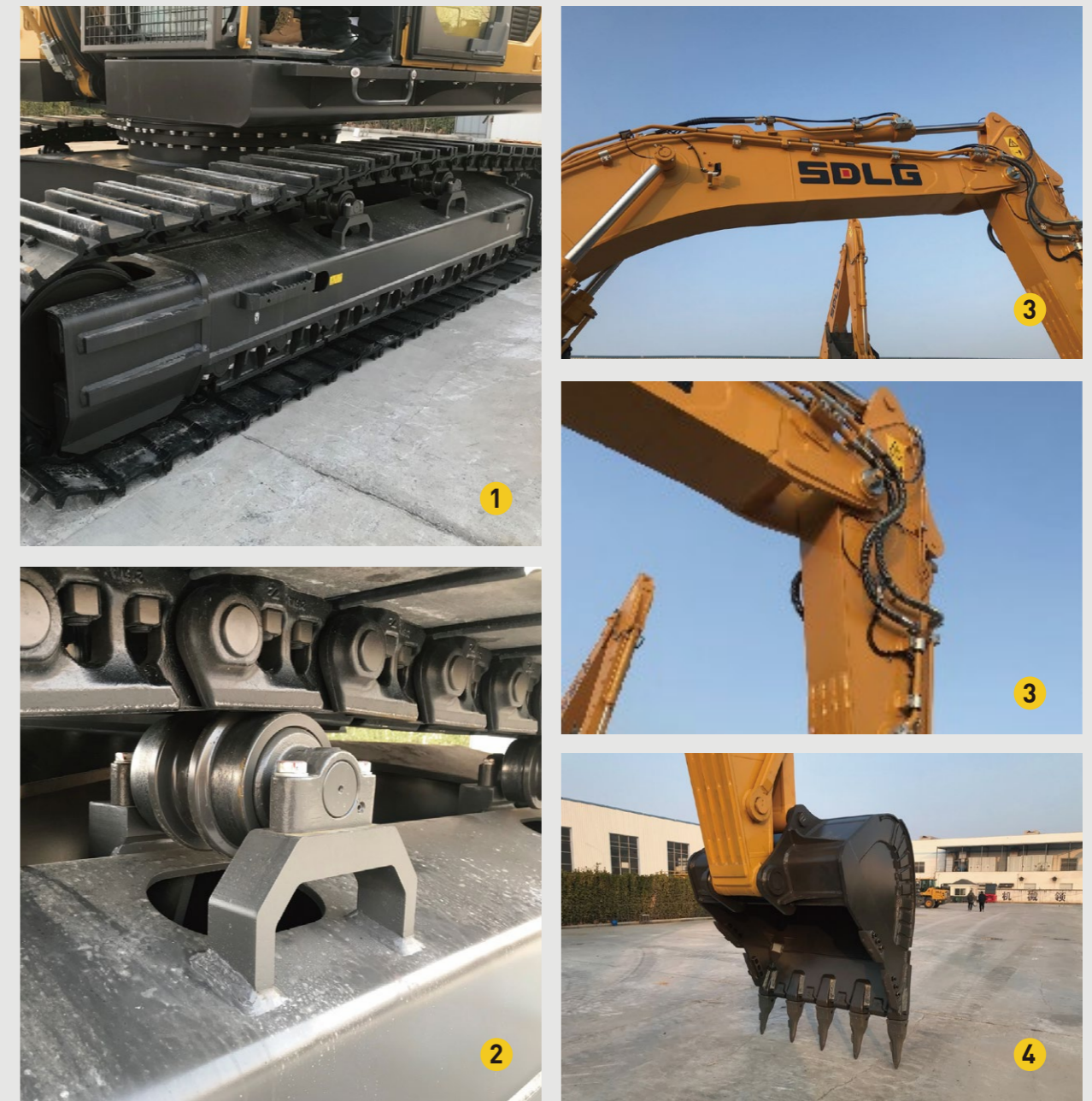
Advanced technology, higher efficiency

- 1 Adopts the most advanced electro-hydraulic system, perfect power utilization rate among engine and hydraulic system, has higher efficiency, lower fuel consumption and better working performance
- 2 Customized design, a variety of operating modes and working modes are available, adapt to different operating habits and working conditions
- 3 Large displacement main pump cooperate with large flow main control valve, provide high working efficiency



Stable chassis, durable structure

- 1 Chassis lengthening design, 800mm width crawler track, better stability performance, especially in heavy duty work
- 2 Full crawler protective plate, double support seat roller, two teeth reinforced track, reliable and durable
- 3 The boom and arm are welded with high-strength tensile steel plates, with high strength and low failure rate
- 4 The bottom of the bucket and the easy-to-wear parts on two side are welded with wear-resistant plates to prolong the service life



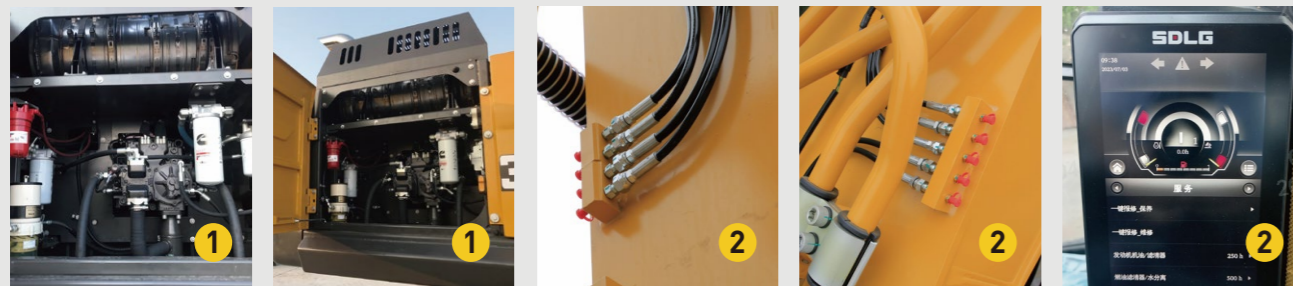
Safe and comfortable operation environment

- 1 With ROPS cabin, inside and outside emergency stop switch, rear camera, operation more safe and reliable
- 2 8' inch touched LCD display, air suspension seat with heating and ventilation, double integrated keypad, warm-box, wraparound AC ventilating system, provide best operation experience



Convenient maintenance, reduce machine downtime

- 1 Large open size engine hood for large space, filters all gathered together, convenient to replace
- 2 Lubrication pipes gathered together, IECU maintenance remind, filter block remind, water in fuel remind, reduce machine downtime



E6375H

Equipment and Features

STANDARD EQUIPMENT

	E6375H
Engine	
Cummins L9 StageV	●
Fuel filler pumps	●
Three-stage filtration of diesel	●
Auto idle system	●
Hydraulic system	
X1 function pipes for hammer&shears	●
Quick Connect Lines	●
Electrical/Electronic control system	
Rear and right side camera	●
Travel alarm(with stop switch in the cab)	●
Rear work lights(cab and counterweight)	●
Rotating Warning Light	●
Spray wiper (2-stage)	●
8-inch touchscreen instrumentation	●
External emergency stop switch	●
In-cab emergency stop switch	●
24V power	●
Cigarette lighter	●
Electric double horn	●
Travel motion alarm device	●
Boom lamp(left side)	●
Cab	
Radio with MP3 USB and bluetooth	●
USB & AUX	●
OBD	●
mechanical suspension seat	●
Safety belt	●
Front window sunshade	●
Rear window sunshade	●
Front window tempered glass	●
Evacuation hammer	●
Emergency exit	●
Drink holder	●
Hot & cool box	●
Footrest	●
Automatic climate control	●

Interior cab light	●
storage compartment	●
Skylight	●
Cabin top guard (OPG)	●
cab front window upper guard	●
Frame	
600mm shoes	●
2.1 cubic metre	●
Crushing hammer φ165	●
Others	
Scraper	●
Skid-resistant plates and handrails	●
Standard tool kit	●
Dust-proof net of radiator	●
DOC+DPF+SCR	●

OPTIONAL EQUIPMENT

	E6375H
Hydraulic system	
X1 X3 function pipes for hammer&shears with rotation	○
Hydraulic explosion-proof valves	○
Electrical/Electronic control system	
all around cameras	○
Cab front work light×4(LED)	○
boom light×4(LED)	○
Cab	
Multi-function handle (with sliding proportional switch)	○
Air suspension seat (With ventilation and heating)	○
ROPS cab	○
Lower cab window front guard	○
Frame	
700/800/900mm shoes	○
Others	
Automatic lubrication	○
4KG External Fire Extinguisher Holder	○

Standard equipment: ● Optional equipment: ○

E6375H

Main Parameter

ENGINE

	Unit	E6375H
Model	-	L9
Type	-	In-line six-cylinder, four-stroke, supercharged, inter-cooled
Rated power	kW@rpm	252
Max. torque	Nm@rpm	1526/1400
Displacement	ml	8900
No. of cylinders	-	6
Cylinder bore x stroke	Φ×mm	114×145
Emission	-	Stage V / tier4f final

HYDRAULIC SYSTEM

	Unit	E6375H
Hydraulic system type	-	
Main pumps	-	Fully electronically controlled constant power positive flow control
Max flow rate	L/min	2×342+28.5
Relief valve setting		
Implement circuit	bar	34.3/37MPa
Travel circuit	bar	353
Swing circuit	bar	260
Pilot circuit	bar	39

ELECTRICAL SYSTEM

	Unit	E6375H
System voltage	V	28
Battery voltage	V	24
Battery capacity	Ah	200
Alternator voltage	V	28
Starter voltage	V	24

DRIVE AND BRAKES

	Unit	E6375H
Drive motors	-	piston motor
Max drawbar pull	kN	262
Max travel speed (low/high)	km/h	4.1/5.7
Service/parking brakes	-	Wet and disc type
Gradeability	°	35

SWING SYSTEM

	Unit	E6375H
Swing motor	-	piston motor
Swing brake	-	Wet and disc type
Swing speed	r/min	9.3

UNDERCARRIAGE

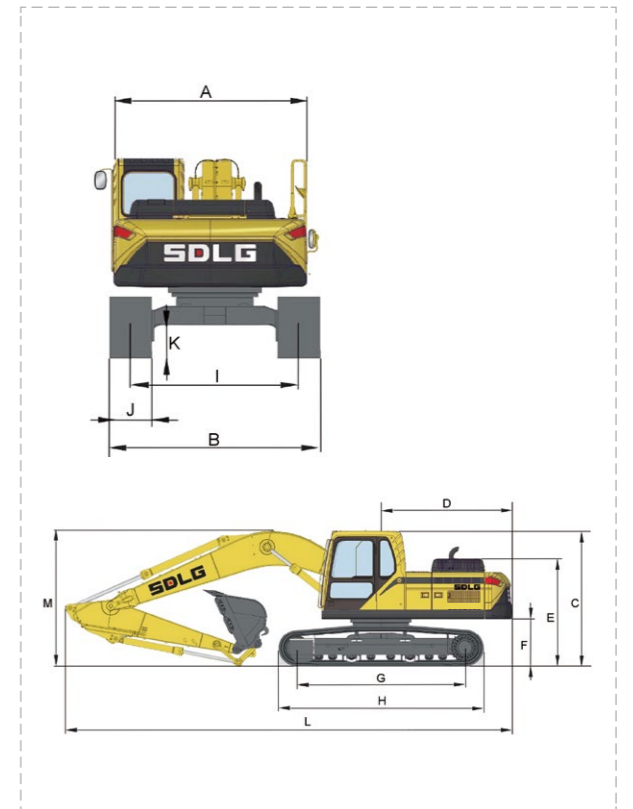
	Unit	E6375H
No. of track shoes	-	2×50
No. of top rollers	-	2×2
No. of bottom rollers	-	2×9
No. of track guards	-	2×4

SERVICE REFILL CAPACITY

	Unit	E6375H
Fuel tank	L	725
Engine coolant	L	45
Engine oil	L	35
Swing drive	L	2×4
Travel drive	L	2×6.8
Hydraulic tank	L	195
Hydraulic system	L	450

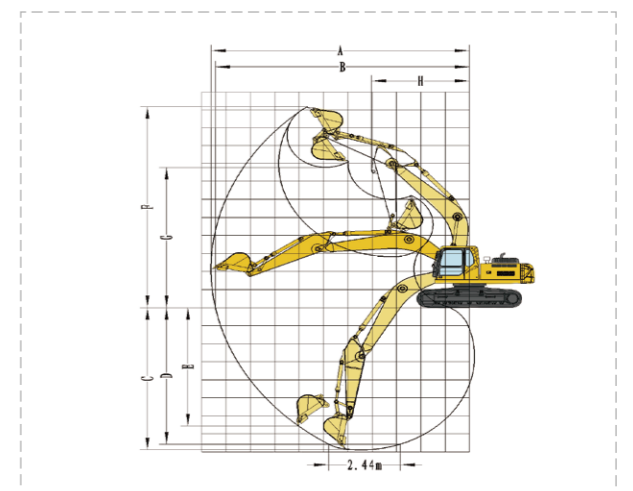
DIMENSIONS

	Unit	E6375H
Boom length	mm	6450
Arm length	mm	2950
A Overall width of upper assembly	mm	3560
B Overall width	mm	3560
C Overall height	mm	3760
D Tail swing radius	mm	3570
E Overall height of engine hood	mm	2700
F Counterweight clearance	mm	1160
G Wheel base	mm	4240
H Track length	mm	5180
I Track gauge	mm	2740
J Shoe width	mm	600
K Min. ground clearance	mm	500
L Overall length	mm	11320
M Overall height of boom	mm	3760
Bucket capacity	m³	2.1
Operating weight	kg	39900



EXCAVATING RANGE

	Unit	E6375H
A Max. digging reach	mm	11010
B Max. digging reach on ground	mm	10800
C Max. digging depth	mm	7270
D Max. digging depth (horizontal 2.44 m)	mm	7100
E Max. vertical wall digging depth	mm	5670
F Max. cutting height	mm	10220
G Max. dumping height	mm	7170
H Min. front swing radius	mm	4400
Max. excavating force of bucket (ISO)	kN	236
Max. excavating force of arm (ISO)	kN	228.5



* The right of final interpretation of the abovementioned parameters shall be reserved by SDLG. No further notice will be given in case of any change, illustrations in the text may not always be the standard illustrations for this model.