



SDLG machines are built to be like the people that own them: hardworking, genuine and reliable. Cost effective, robust machines with fuel efficient engines that are easy to operate and easy to maintain. And when you need parts or service, you can trust your dealership to deliver on the SDLG promise: **Reliability in Action.**



Congratulations SDLG for winning
EFQM Global Excellence Award
One of the top three quality awards in the world

Shandong Lingong Construction Machinery Co., Ltd

Contacts: Budapest, Benczúr u. 11, 1068 Hungary
Website: www.sdlg-eu.com | Email: info@sdlg-eu.com
sales@sdlg-eu.com | +36 30 247 2606

Member of the VOLVO Group Since 2007

SDLG is member of the Volvo Group and one of the largest manufacturers of construction machinery in China, with a wide network of dealerships and service workshops throughout the world.

Reliability in Action



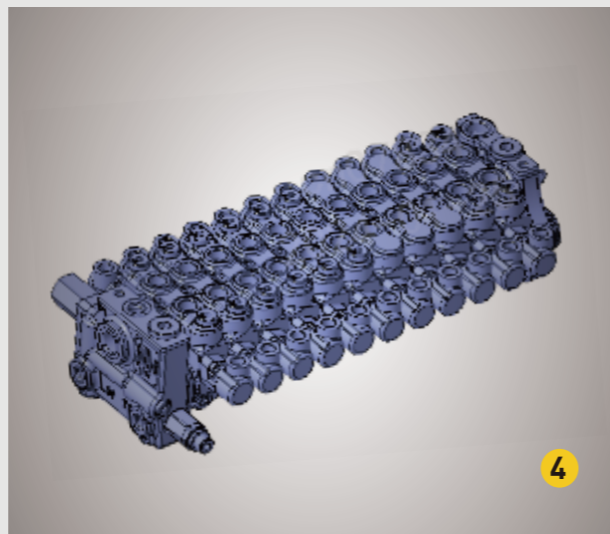
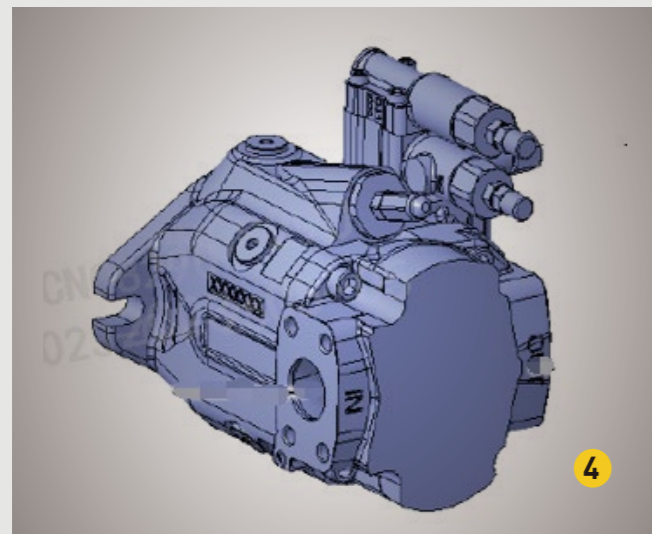
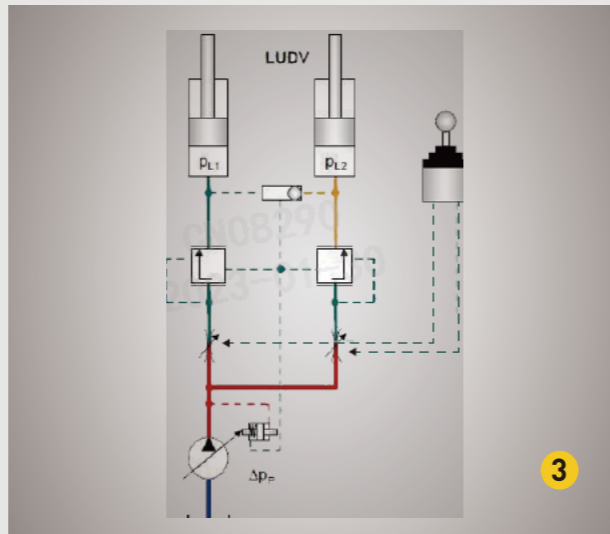
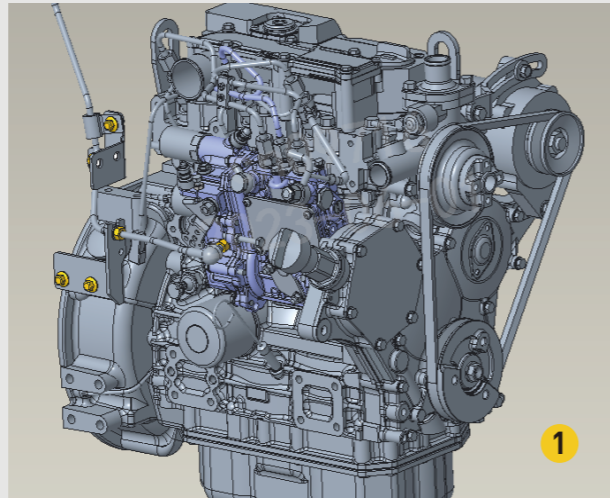
ER620H

Hydraulic Excavator



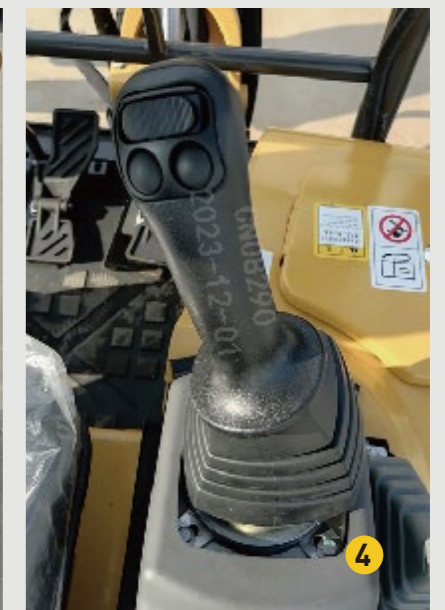
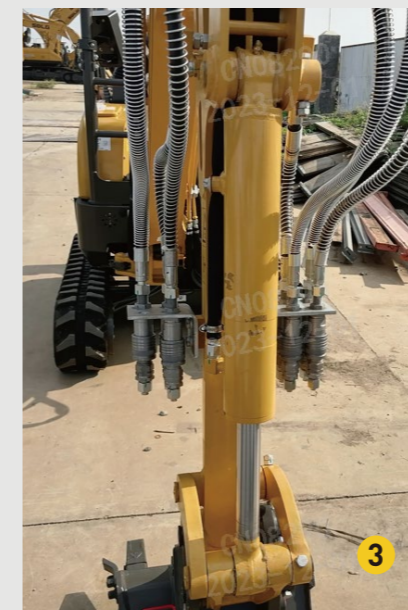
Energy Saving, High efficient

- 1 The electronically controlled unit pump can be powered by multi-grade fuels, the engine is durable, and the failure rate is low
- 2 It has low vibration and noise, best quality, performance, make it has long lifetime
- 3 load sensing hydraulic system, which has quick action response, and better energy saving performance
- 4 Flow distributed by demand, flexible compound operation, high working efficiency



Multi-functional, variety adaptability

- 1 Upper swing mechanism tailless design with boom swing function, make it perfect adapt to narrow space and corner
- 2 Retractable chassis can let it pass narrow passage and easy to dig ditch of different width
- 3 With X1/X3 pipeline for installing breaker or grappler quickly, very convenient switching for different working condition
- 4 With mechanical quick coupler, easy to change different kinds of attachment quickly



Flexible operation, comfort experience

- 1 Working device and travel all use pilot control joysticks, flexible operation, without fatigue even for long hours work
- 2 ROPS&OPG (level1) canopy, large rear mirror, rotating beacon, travel alarm, all provide safe operation environment
- 3 7' inch colorful display, integrated keypad for comfort operation experience



Convenient maintenance, reduce machine downtime

- 1 Large rear open space for maintenance, all filter and maintenance point gathered, saving time
- 2 Seat can turn over forward, engine detect more convenient



ER620H

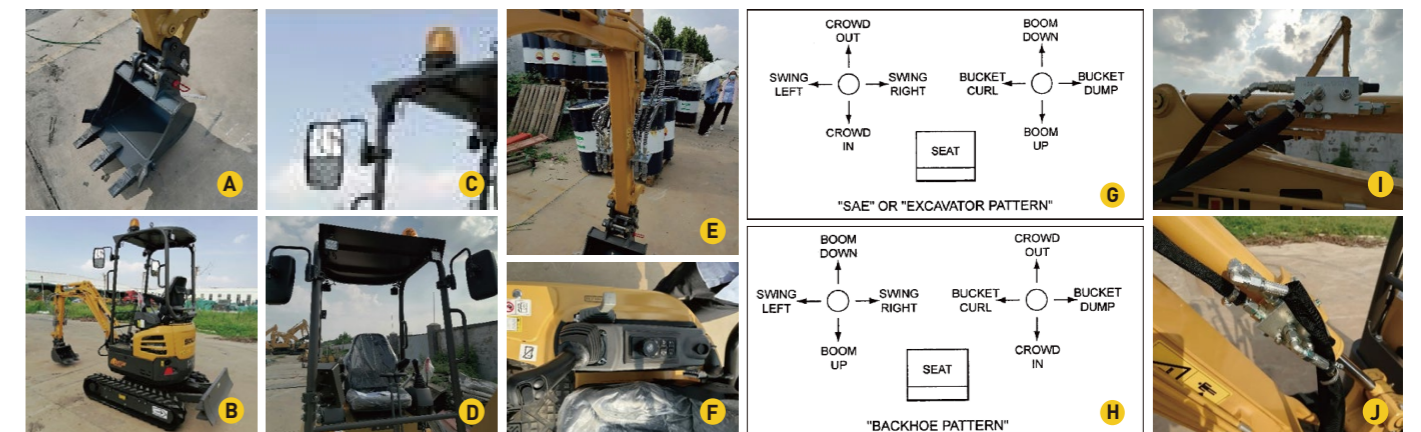
Equipment and Features

Standard configurations

#	Category	Disposition	
1	Main features	Yanmar 3TNV80F-SPLG	
2		GP bucket 0.04×410	A
3		Standard arm	
4		Rubber track shoe in 230mm	
5		Pilot control and load sensing	
6		Hydraulic drive	
7	Cab	ROPS Cabin	
8		Mechanical suspension seat	B
9		Walking alarms	
10		Rotate beacon	
11		Emergency shutdown switch	
12		Rear mirror	C
13	Multifunctional configuration	Radio	
14		Fire extinguisher bracket	D
15		Two-inch-wide seat belts	
16		X1 and X3 pipes	
17	Others	Multi-function handle	
18		Hammer pipes	E
19		Pipe quick couper	F
20		Rear auxiliary light	
21		Blade	

Optional equipment

#	Category	Disposition	
1	Optional working devices	Straight crushing hammer HB45	
2		hammerφ45	
3		QC	
4		Hammer and shear pipes	
5	Operation mode	SAE pattern	G
6		Backhoe pattern	H
7	Working mode	Working model P S E	
8		Boom cylinder explosion-proof valve	I
9	Safety	Arm cylinder explosion-proof valve	J
10	Track	230 mm steel track	



ER620H

Main Parameter

ENGINE

	Unit	ER620H
Model	-	3TNV80F-SPLGC
Type	-	Inline, water-cooled, four-stroke
Rated power	kW@rpm	14.6
Max. torque	Nm@rpm	63.2-67.4/1800
Displacement	ml	1267
No. of cylinders	-	3
Cylinder bore x stroke	Φ×mm	80×84
Emission	-	GB20891-2014(China phase IV)

DRIVE AND BRAKES

	Unit	ER620H
Drive motors	-	Axial piston motor
Max drawbar pull	kN	13
Max travel speed (low/high)	km/h	2/4
Service/parking brakes	-	Hydraulic brake
Gradeability	°	25

HYDRAULIC SYSTEM

	Unit	ER620H
Hydraulic system type	-	Load sensing control system
Main pumps	-	Axial piston pump
Max flow rate	L/min	52
Relief valve setting		
Implement circuit	bar	240
Travel circuit	bar	240
Swing circuit	bar	125
Pilot circuit	bar	35

SWING SYSTEM

	Unit	ER620H
Swing motor	-	Axial piston motor
Swing brake	-	hydraulic brake
Swing speed	r/min	9.2

UNDERCARRIAGE

	Unit	ER620H
No. of track shoes	-	70
No. of top rollers	-	/
No. of bottom rollers	-	2×3
No. of track guards	-	-

ELECTRICAL SYSTEM

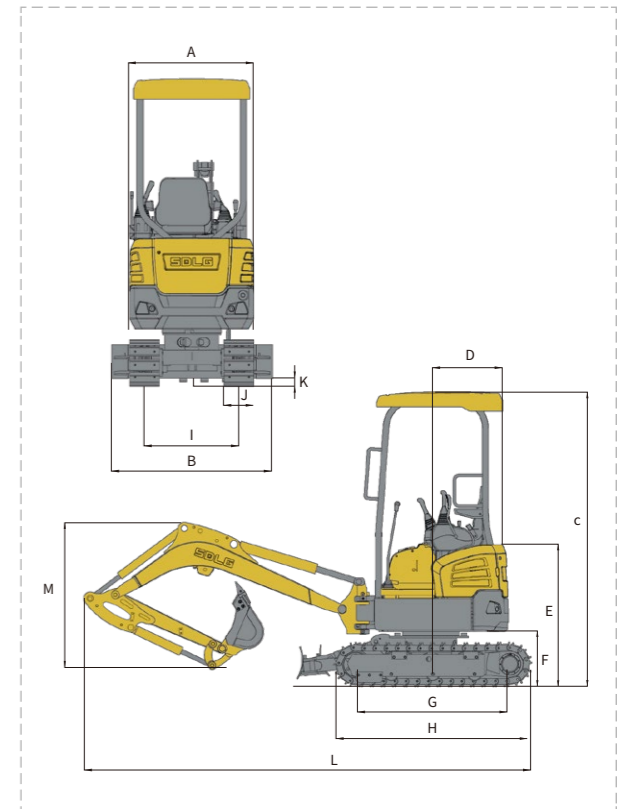
	Unit	ER620H
System voltage	V	12
Battery voltage	V	12
Battery capacity	Ah	45
Alternator voltage	V	12
Starter voltage	V	12

SERVICE REFILL CAPACITY

	Unit	ER620H
Fuel tank	L	21
Engine coolant	L	3
Engine oil	L	3.4
Swing drive	L	-
Travel drive	L	2×0.35
Hydraulic tank	L	8.5
Hydraulic system	L	13

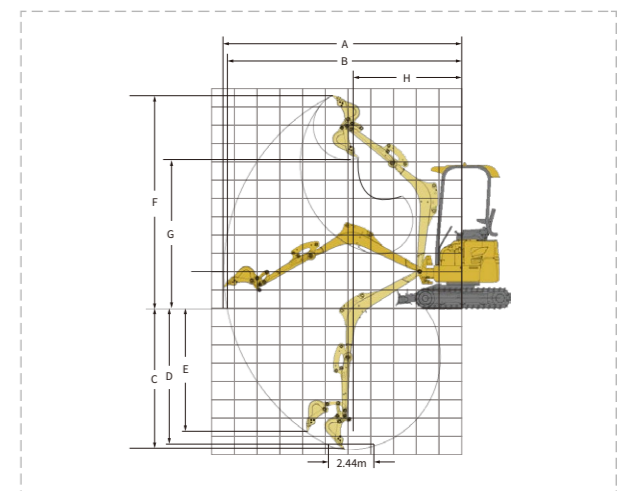
DIMENSIONS

	Unit	ER620H
Boom length	mm	1830
Arm length	mm	965
A Overall width of upper assembly	mm	990
B Overall width	mm	990(1240)
C Overall height	mm	2585
D Tail swing radius	mm	650
E Overall height of engine hood	mm	1200
F Counterweight clearance	mm	440
G Wheel base	mm	1230
H Track length	mm	1585
I Track gauge	mm	730/1010
J Shoe width	mm	230
K Min. ground clearance	mm	145
L Overall length	mm	3608
M Overall height of boom	mm	1190
Bucket capacity	m ³	0.04
Operating weight	kg	2000



EXCAVATING RANGE

	Unit	ER620H
A Max. digging reach	mm	11290
B Max. digging reach on ground	mm	11050
C Max. digging depth	mm	7030
D Max. digging depth (horizontal 2.44 m)	mm	6880
E Max. vertical wall digging depth	mm	6430
F Max. cutting height	mm	10590
G Max. dumping height	mm	7020
H Min. front swing radius	mm	4740
Max. excavating force of bucket (ISO)	kN	276.5
Max. excavating force of arm (ISO)	kN	235



* The right of final interpretation of the abovementioned parameters shall be reserved by SDLG. No further notice will be given in case of any change, illustrations in the text may not always be the standard illustrations for this model.