

Reliability in Action



**SDLG machines** are built to be like the people that own them: hardworking, genuine and reliable. Cost effective, robust machines with fuel efficient engines that are easy to operate and easy to maintain. And when you need parts or service, you can trust your dealership to deliver on the SDLG promise: **Reliability in Action.**



Congratulations SDLG for winning  
**EFQM Global Excellence Award**  
One of the top three quality awards in the world

**Shandong Lingong Construction Machinery Co., Ltd**

Contacts: Budapest, Benczúr u. 11, 1068 Hungary  
Website: [www.sdlg-eu.com](http://www.sdlg-eu.com) | Email: [info@sdlg-eu.com](mailto:info@sdlg-eu.com)  
[sales@sdlg-eu.com](mailto:sales@sdlg-eu.com) | +36 30 247 2606

**Member of the VOLVO Group Since 2007**

**SDLG is member of the Volvo Group** and one of the largest manufacturers of construction machinery in China, with a wide network of dealerships and service workshops throughout the world.



# ER626H

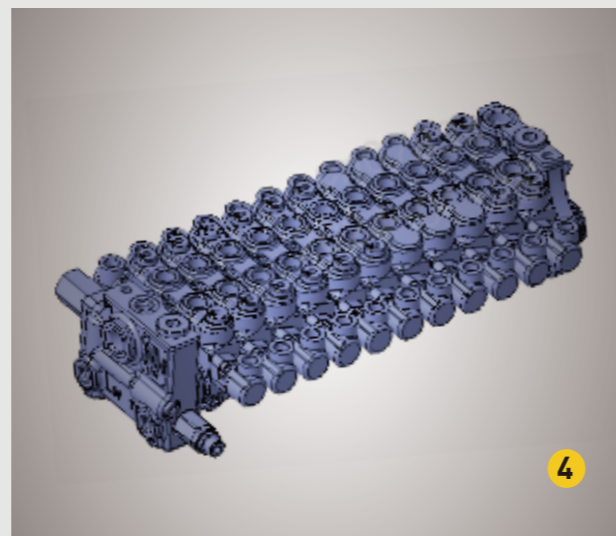
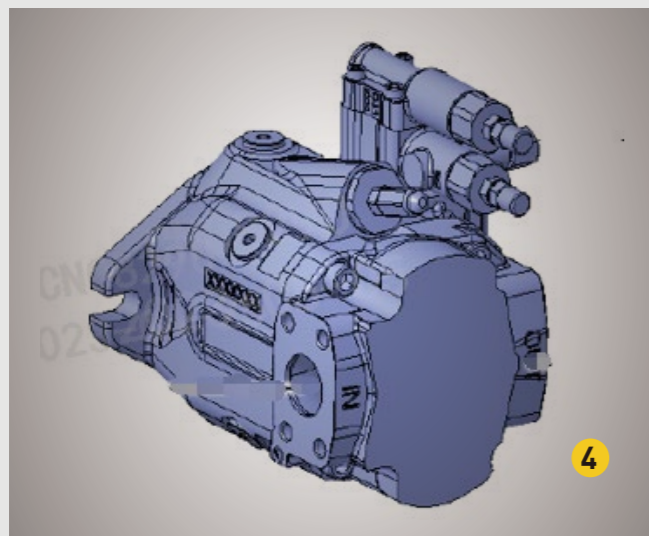
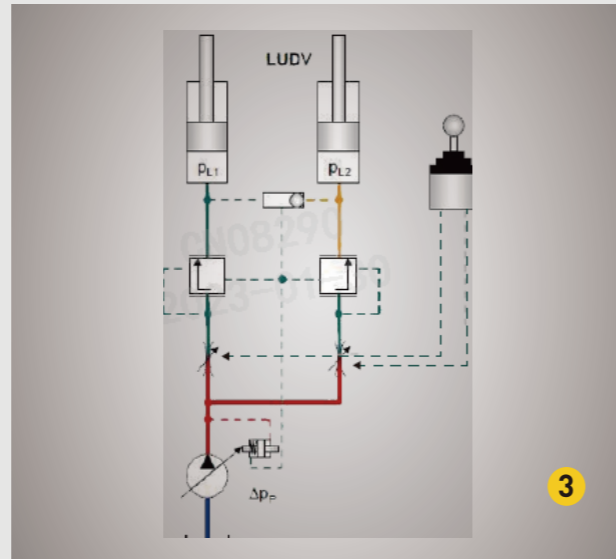
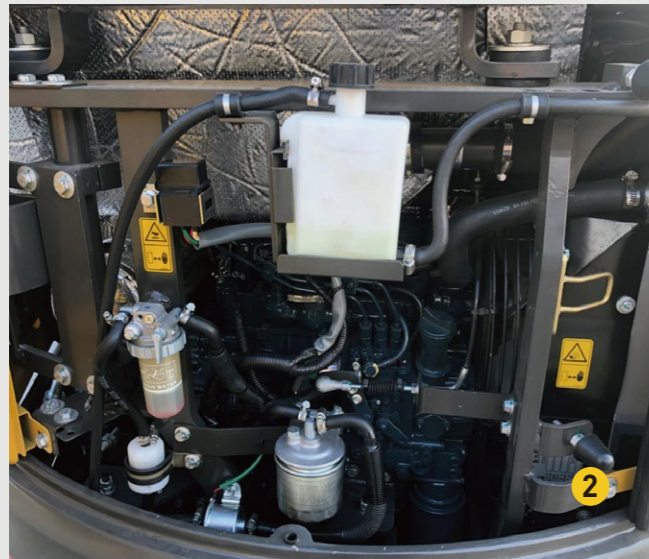
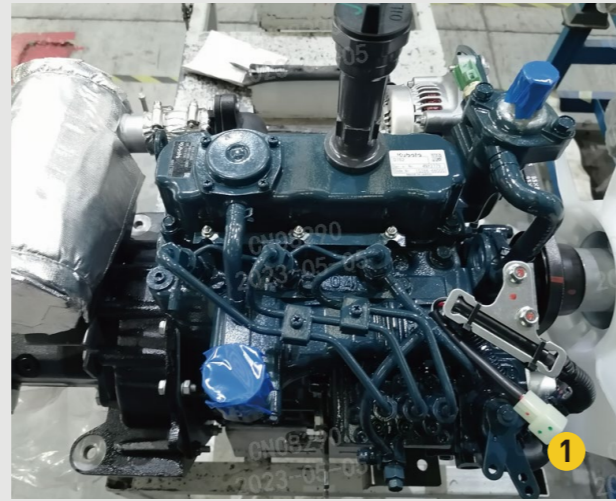
## Hydraulic Excavator





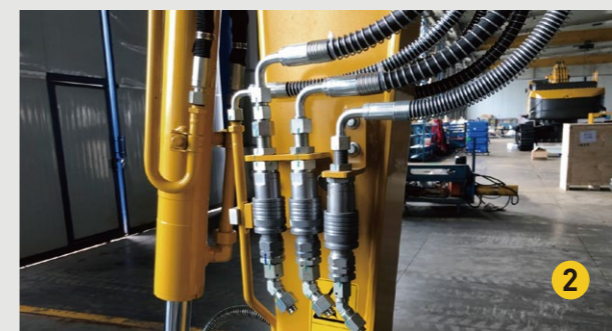
## Energy saving, high efficient

- 1 Kubota engine famous for its low fuel consumption, energy saving
- 2 It has low vibration and noise, best quality, performance, make it has long lifetime
- 3 load sensing hydraulic system, which has quick action response, and better energy saving performance
- 4 Flow distributed by demand, flexible compound operation, high working efficiency



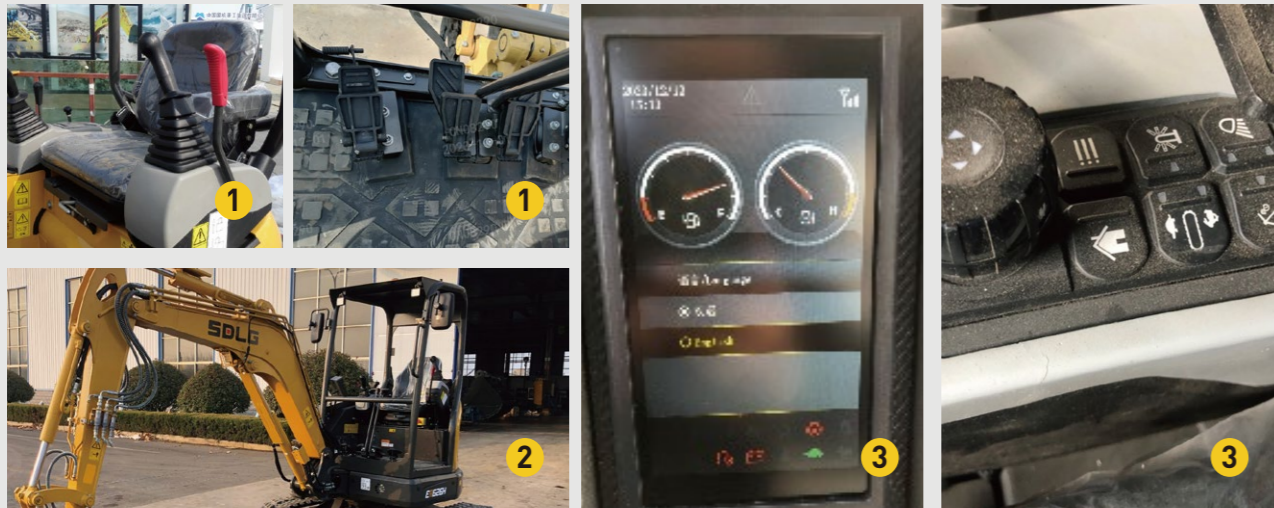
## Multi-functional, variety adaptability

- 1 Upper swing mechanism tailless design with boom swing function, make it perfect adapt to narrow space and corner
- 2 With X1/X3 pipeline for installing breaker or grapple quickly, very convenient switching for different working condition
- 3 With hydraulic quick coupler, easy to change different kinds of attachment quickly
- 4 With mechanical quick coupler, easy to change different kinds of attachment quickly



## Flexible operation, comfort experience

- 1 Working device and travel all use pilot control joysticks, flexible operation, without fatigue even for long hours work
- 2 ROPS&OPG (level1) canopy, large rear mirror, rotating beacon, travel alarm, all provide safe operation environment
- 3 7' inch colorful display, integrated keypad for comfort operation experience



## Convenient maintenance, reduce machine downtime

- 1 Large rear open space for maintenance, all filter and maintenance point gathered, saving time
- 2 Seat can turn over forward, engine detect more convenient



## ER626H

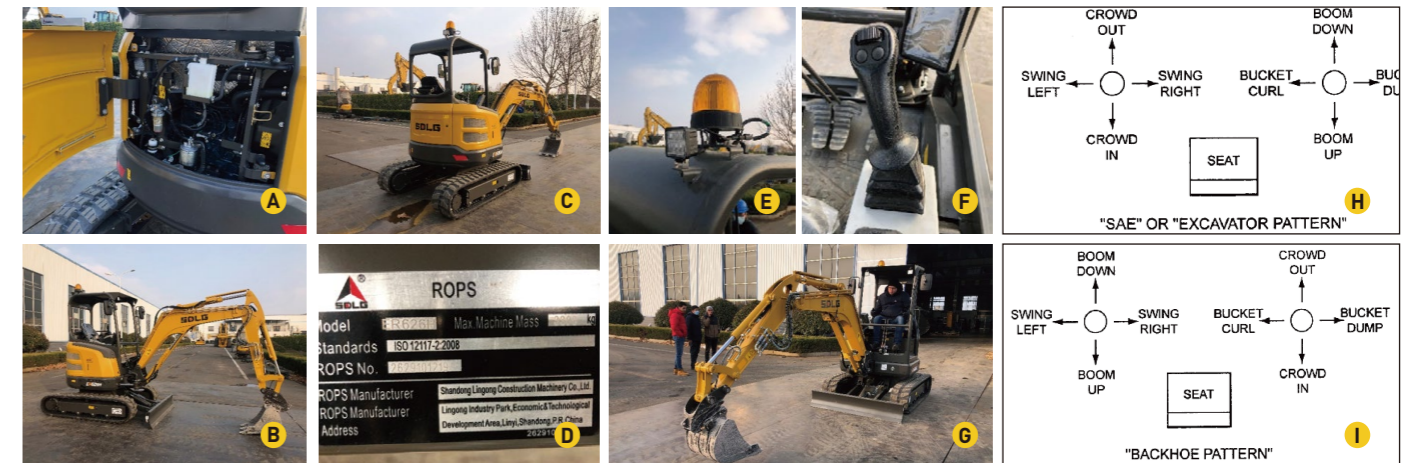
### Equipment and Features

#### Standard configurations

#	Category	Disposition	
1	Main features	Kubota D1105	A
2		GP bucket 0.06×470	
3		Standard arm	B
4		Rubber track shoe in 300mm	C
5		Pilot control and load sensing	
6	Cab	Hydraulic drive	
7		ROPS Cabin	D
8		Mechanical suspension seat	
9		Walking alarms	
10		Rotate beacon	E
11		Emergency shutdown switch	
12		Rear mirror	
13		Radio	
14		Fire extinguisher bracket	
15		Two-inch-wide seat belts	
16	Multifunctional configuration	X1 and X3 pipes	
17		Multi-function handle	
18		Hammer pipes	E
19	Others	Pipe quick couper	F
20		Rear auxiliary light	
21		Blade	

#### Optional equipment

#	Category	Disposition	
1	Optional working devices	QC	
2		Hammer and shear pipes	
3	Operation mode	SAE pattern	H
4		Backhoe pattern	I
5	Working mode	P S E	
6	Safety	Boom cylinder explosion-proof valve	
7		Arm cylinder explosion-proof valve	
8	Track	230mm-800mm track shoe	



# ER626H

## Main Parameter

### ENGINE

	Unit	ER626H
Model	-	D1105-EF07_CN4
Type	-	Inline, water-cooled, four-stroke
Rated power	kW@rpm	15.4
Max. torque	Nm@rpm	70.3/1600
Displacement	ml	1123
No. of cylinders	-	3
Cylinder bore x stroke	Φ×mm	78×78.4
Emission	-	T4f/StageV

### DRIVE AND BRAKES

	Unit	ER626H
Drive motors	-	Axial piston motor
Max drawbar pull	kN	18.4
Max travel speed (low/high)	km/h	2.3/4
Service/parking brakes	-	Wet and disc type
Gradeability	°	30

### HYDRAULIC SYSTEM

	Unit	ER626H
Hydraulic system type	-	Load sensing control system
Main pumps	-	Axial piston pump
Max flow rate	L/min	70
<b>Relief valve setting</b>		
Implement circuit	bar	245
Travel circuit	bar	245
Swing circuit	bar	196
Pilot circuit	bar	40

### SWING SYSTEM

	Unit	ER626H
Swing motor	-	Axial piston motor
Swing brake	-	Wet and disc type
Swing speed	r/min	10.5

### UNDERCARRIAGE

	Unit	ER626H
No. of track shoes	-	80
No. of top rollers	-	2×1
No. of bottom rollers	-	2×4
No. of track guards	-	-

### ELECTRICAL SYSTEM

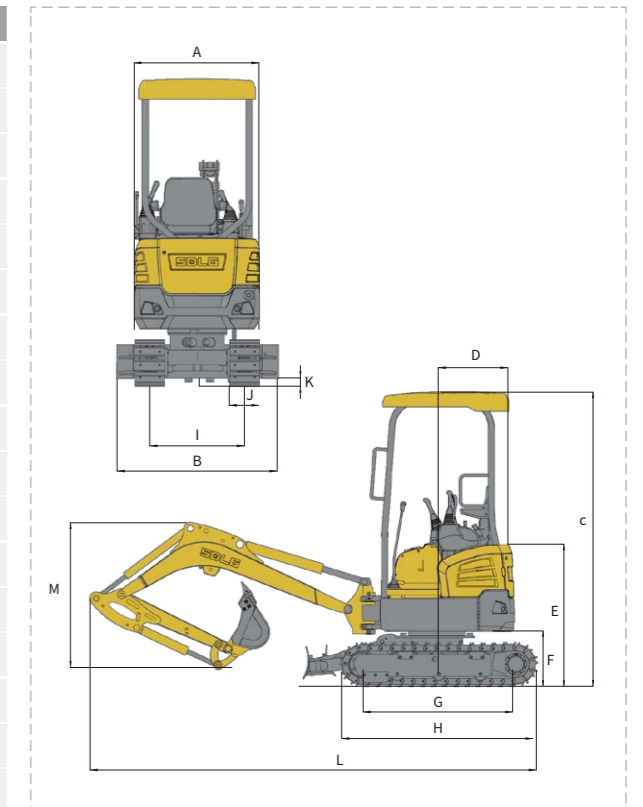
	Unit	ER626H
System voltage	V	12
Battery voltage	V	12
Battery capacity	Ah	45
Alternator voltage	V	12
Starter voltage	V	12

### SERVICE REFILL CAPACITY

	Unit	ER626H
Fuel tank	L	34
Engine coolant	L	6.7
Engine oil	L	5.1
Swing drive	L	-
Travel drive	L	2×0.6
Hydraulic tank	L	18
Hydraulic system	L	40

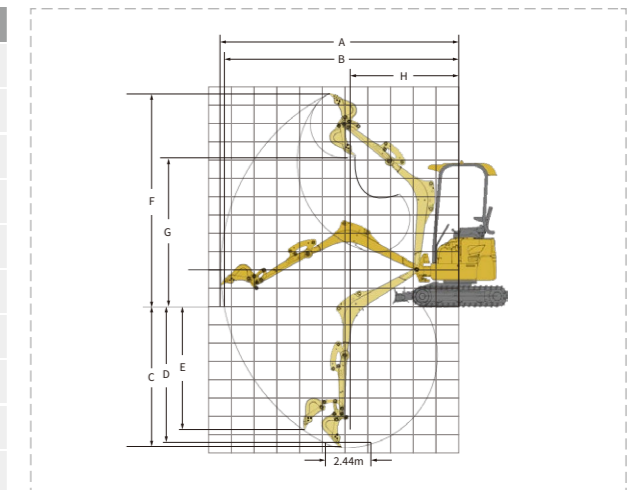
### DIMENSIONS

	Unit	ER626H
Boom length	mm	12130
Arm length	mm	1300
A Overall width of upper assembly	mm	1375
B Overall width	mm	1550
C Overall height	mm	2460
D Tail swing radius	mm	775
E Overall height of engine hood	mm	1465
F Counterweight clearance	mm	560
G Wheel base	mm	1560
H Track length	mm	1995
I Track gauge	mm	1250
J Shoe width	mm	300
K Min. ground clearance	mm	255
L Overall length	mm	4365
M Overall height of boom	mm	1565
Bucket capacity	m³	0.06
Operating weight	kg	2850



### EXCAVATING RANGE

	Unit	ER626H
A Max. digging reach	mm	4880
B Max. digging reach on ground	mm	4760
C Max. digging depth	mm	2860
D Max. digging depth (horizontal 2.44 m)	mm	2360
E Max. vertical wall digging depth	mm	2500
F Max. cutting height	mm	4410
G Max. dumping height	mm	4410
H Min. front swing radius	mm	2100
Max. excavating force of bucket (ISO)	kN	24.5
Max. excavating force of arm (ISO)	kN	18



\* The right of final interpretation of the abovementioned parameters shall be reserved by SDLG. No further notice will be given in case of any change, illustrations in the text may not always be the standard illustrations for this model.